

James B. Beam Distilling Co. Phase 1 & 2

Clermont, KY

After completion of the Master Plan in 2020, OJB has continued to work with James B Beam Distilling Company on the multi-phased renovation of their campus in Clermont, KY.

Phase 1, currently nearing the end of construction, focuses on visitor spaces adjacent to new and expanded buildings on campus. A tree filled dining terrace expands seating capacity for the recently opened Kitchen Table restaurant. Custom movable cutting gardens within this terrace support the mixology program. A cocktail grove and event lawns overlooks the distillery and new pathways encourage exploration of the grounds. The arrival garden for Fred B. Noe craft distillery offers signature moment of arrival and spaces to rest in the shade.

Phase 2, currently in development, will create a shared staff and visitor entry experience and restore paved areas in the center of campus to native landscape. Visitors will arrive through a signature arrival court on access with the American Outpost visitor center and gather for the distillery tour in a lushly planted departure court. The rackhouse tour is routed through new meadows, offering visitors an opportunity to connect with nature. Sustainable efforts of native restoration and stormwater capture are woven throughout, and the relocation of staff parking sets the stage for future phases to restore the campus ecology and expand visitor programming.

Client

James B. Beam Distilling Co.

Size

3 acres | Phase 1
13 acres | Phase 2

Dates

2020 - 2022 | Phase 1
2021-2024 | Phase 2

Team

Buzick Construction
Bergmeyer
Joseph & Joseph + Bravura
LOVE Creative
LD&D Engineering
Carter Design Group



James B. Beam Distilling Co. Master Plan / Phase 1 & 2

Clermont, KY

After completion of the Master Plan in 2020, OJB has continued to work with James B Beam Distilling Company on the multi-phased renovation of their campus in Clermont, KY.

Phase 1, currently nearing the end of construction, focuses on visitor spaces adjacent to new and expanded buildings on campus. A tree filled dining terrace expands seating capacity for the recently opened Kitchen Table restaurant. Custom movable cutting gardens within this terrace support the mixology program. A cocktail grove and event lawns overlooks the distillery and new pathways encourage exploration of the grounds. The arrival garden for Fred B. Noe craft distillery offers signature moment of arrival and spaces to rest in the shade.

Phase 2, currently in development, will create a shared staff and visitor entry experience and restore paved areas in the center of campus to native landscape. Visitors will arrive through a signature arrival court on access with the American Outpost visitor center and gather for the distillery tour in a lushly planted departure court. The rackhouse tour is routed through new meadows, offering visitors an opportunity to connect with nature. Sustainable efforts of native restoration and stormwater capture are woven throughout, and the relocation of staff parking sets the stage for future phases to restore the campus ecology and expand visitor programming.

Client

James B. Beam Distilling Co.

Size

3 acres | Phase 1
13 acres | Phase 2

Dates

2018-2020 | Master Plan
2020 - 2022 | Phase 1
2021-2024 | Phase 2

Team

Bergmeyer
Joseph & Joseph + Bravura
LOVE Creative
LD&D Engineering
Carter Design Group
Buzick Construction



- 1 Arrival Drive
- 2 White Barn Terrace
- 3 Demonstration Agriculture
- 4 FBN Distillery
- 5 Distillery Tour
- 6 Rackhouse Tour
- 7 Cocktail Grove
- 8 Kitchen Table Terrace
- 9 Event Lawn
- 10 Arrival Court
- 11 Staff + Visitor Parking





Ph 2: Arrival Court



Ph 2: Arrival Drive



Phase 2 establishes a new arrival experience for staff and visitors. Consolidated parking and clarified circulation enables relocation of existing staff parking to improve views from visitor spaces and strengthen the sense of place.

Ph. 2: Arrival, Parking + Bottom of Hill Restoration

TREE HOUSE

AMERICAN OUTPOST
VISITOR CENTER +
TASTING ROOM

PHASE 1 LIMIT OF WORK

KITCHEN TABLE
EVENT LAWN

LARGE EVENT
LAWN + TERRACE

HISTORIC BEAM
HOME

COCKTAIL
GROVE

CUTTING
GARDEN

KITCHEN TABLE
TERRACE

KITCHEN TABLE
RESTAURANT

TOUR DROP-OFF

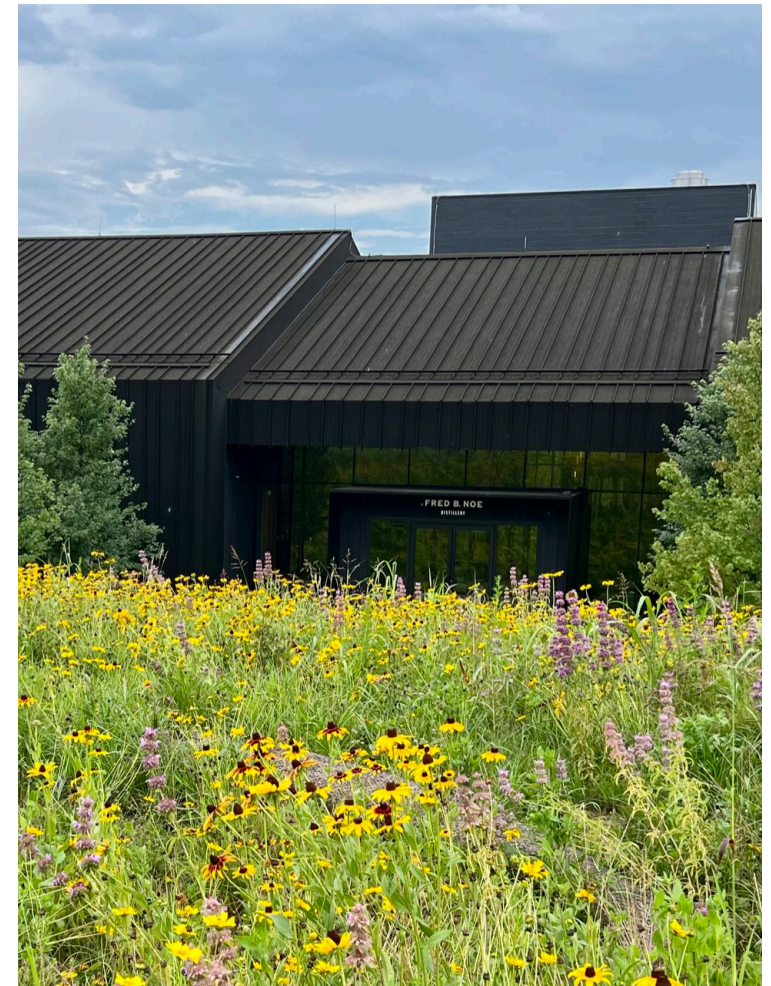
Ph 1: Top Of Hill





The landscape design responds to architecture, framing views into the building. Two seating groves flank the entry and offer opportunities for event programming to extend into the landscape.







PHASE 1 LIMIT OF WORK

KITCHEN TABLE
EVENT LAWN

LARGE EVENT
LAWN + TERRACE

HISTORIC BEAM
HOME

COCKTAIL
GROVE

CUTTING
GARDEN

KITCHEN TABLE
TERRACE

KITCHEN TABLE
RESTAURANT

TOUR DROP-OFF

Ph 1: Top Of Hill



Ph 1: Under Construction



Ph 1: Cocktail Grove



Ph 1: Kitchen Table Terrace

The landscape design responds to architecture, framing views into the building. Two seating groves flank the entry and offer opportunities for event programming to extend into the landscape.



PHASE 1

PHASE 2

Ph 1: FBN Distillery

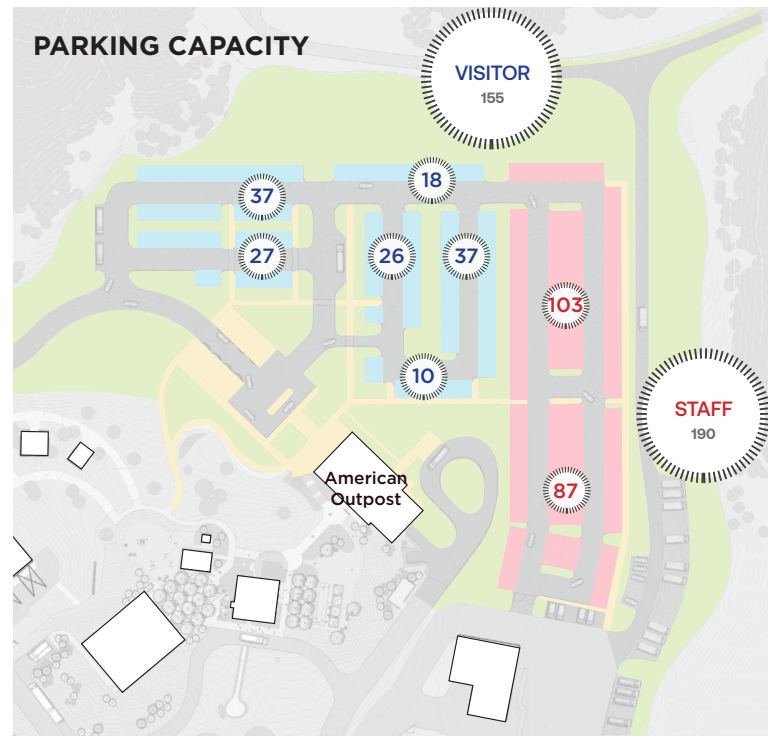
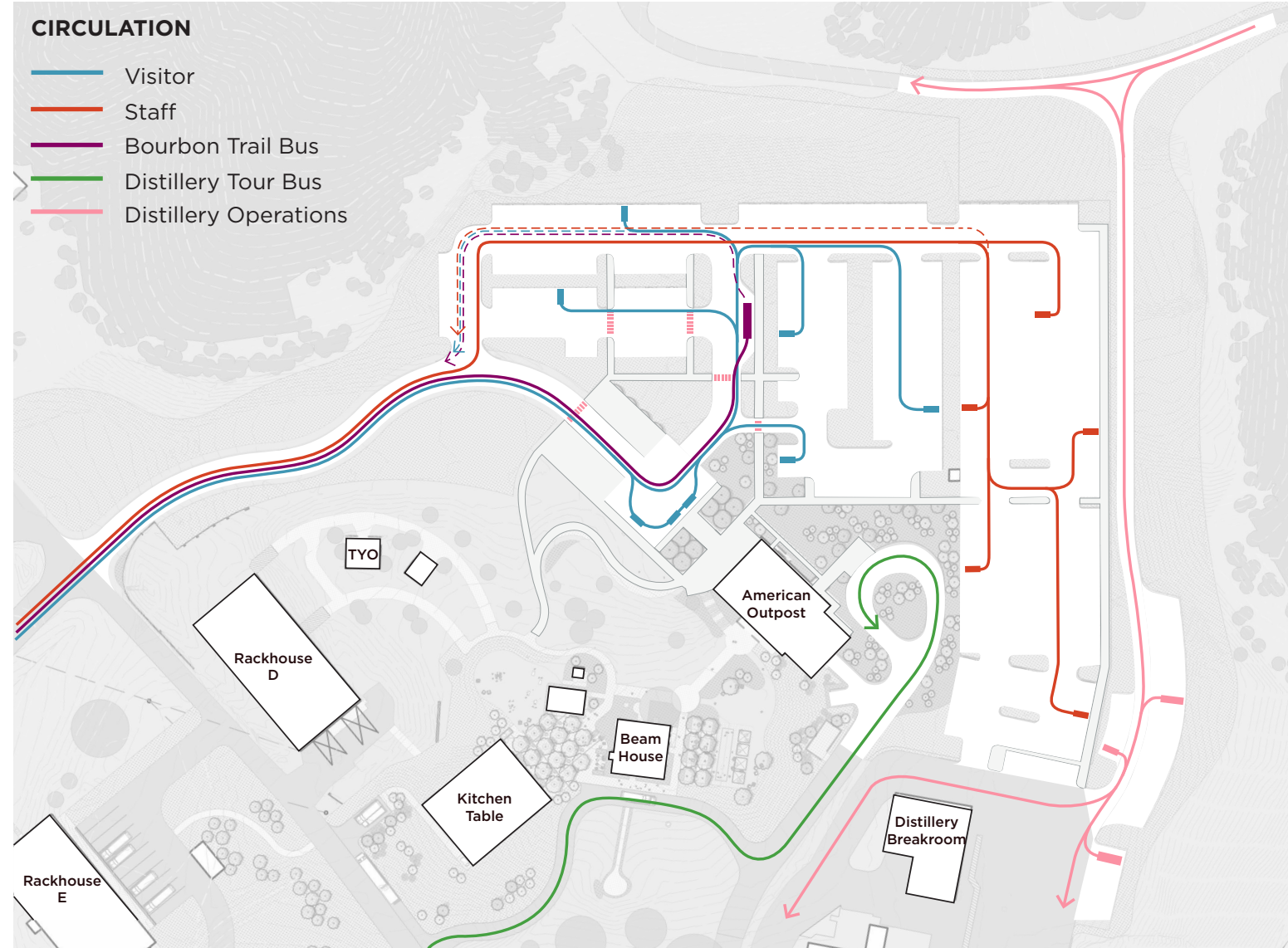


Ph 1: FBN Arrival Walk



Phase 2 establishes a new arrival experience for staff and visitors. Consolidated parking and clarified circulation enables relocation of existing staff parking to improve views from visitor spaces and strengthen the sense of place.

Ph 2: Arrival, Parking + Bottom of Hill Restoration



PROJECT NAME

Side Oats Grama



Little Bluestem



Foxglove Beard Tongue



Lanceleaf Coreopsis



Purple Coneflower



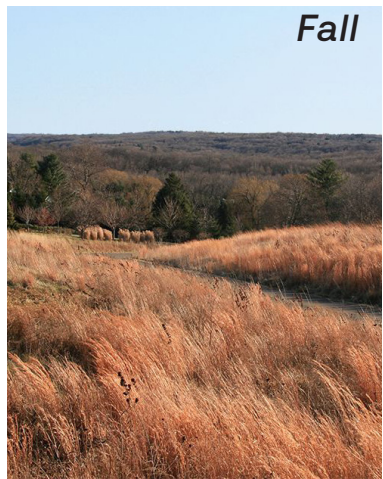
Black Eyed Susan



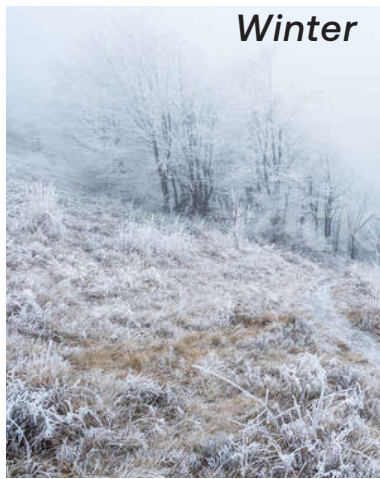
Spring



Summer



Fall



Winter

Converting existing parking lots to native meadow improves visitor experience and signals a commitment to environmental stewardship by reducing water and mowing requirements



Ph 2: Bottom of Hill



Ph 2: Existing



Ph 2: Bottom of Hill