

Texas Christian University School of Music

Fort Worth, TX

The new TCU School of Music is designed to inspire students and transform the east side of campus.

Design began in 2016 on TCU's new School of Music. Since then TCU has expanded this new section of campus to not only include a School of Music, but also a new Fine Arts Center and common area. The objective of this Creative Commons is to enable students of all kinds to benefit from an outdoor area in a variety of ways. What was once a parking lot and field of grass becomes a place for students to collaborate, study, create, socialize and relax.

The School of Music includes a botanical entry, auto court seating areas and a stage space at the edge of the building for impromptu concerts. The Fine Arts Center features botanical gardens and seating decks, and the Creative Commons connects the two buildings with seating groves, an event lawn, a water feature, and botanical gardens.

Client

Texas Christian University

Size

3.5 acres - School of Music
1.6 acres - School of Fine Arts
1 acre - Creative Commons

Dates

2016-2020

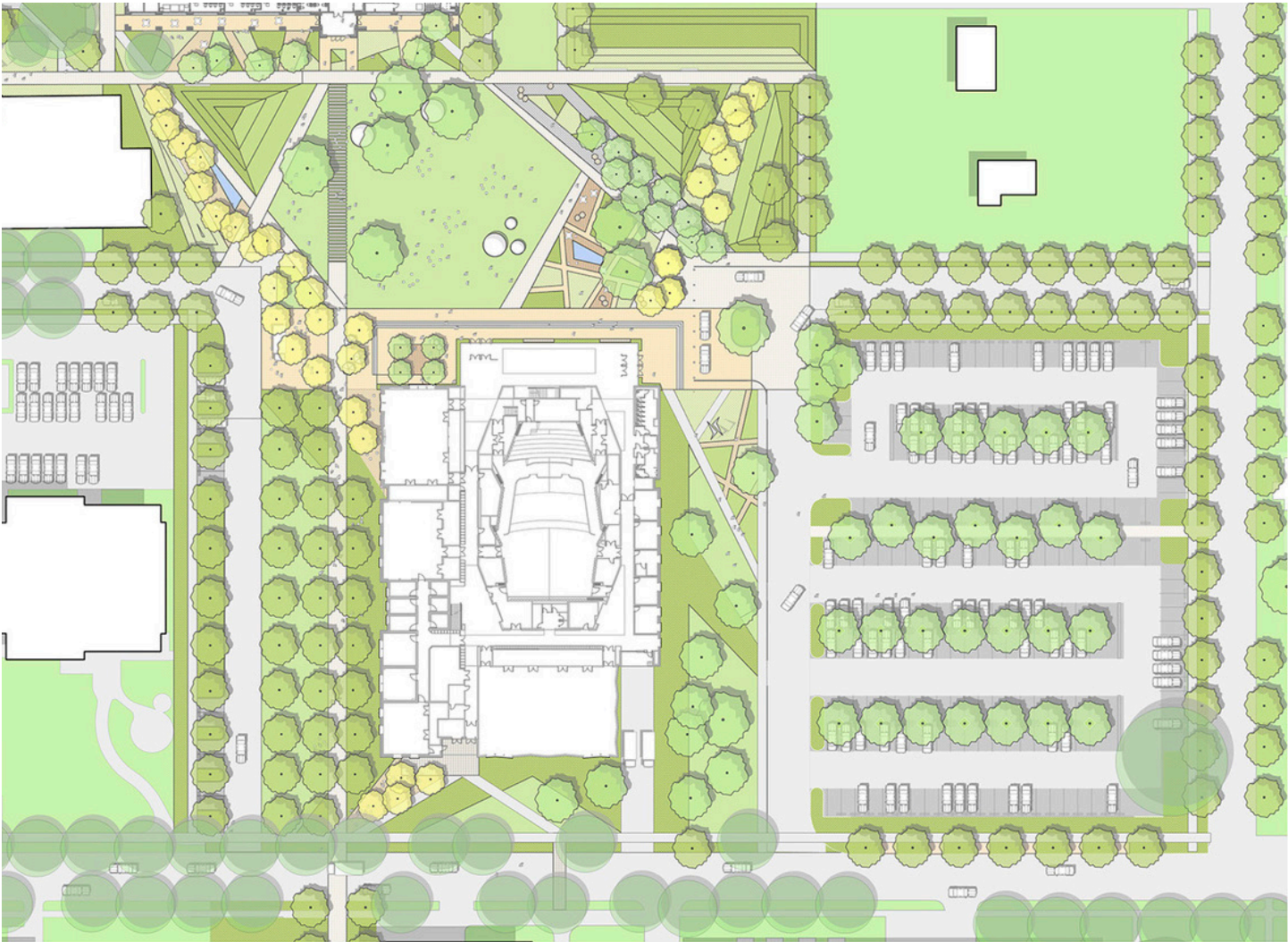
LEED

Silver

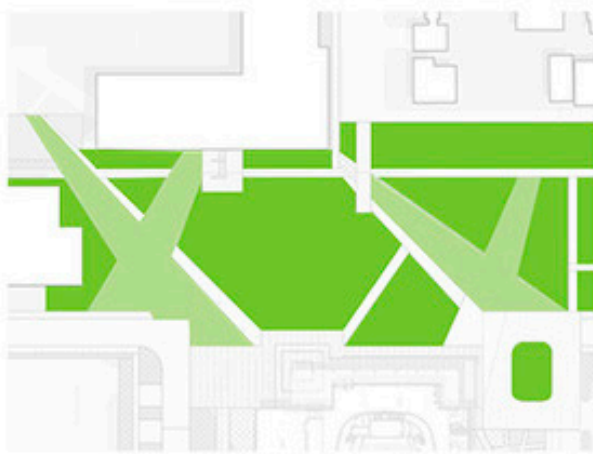
Team

BORA Architects



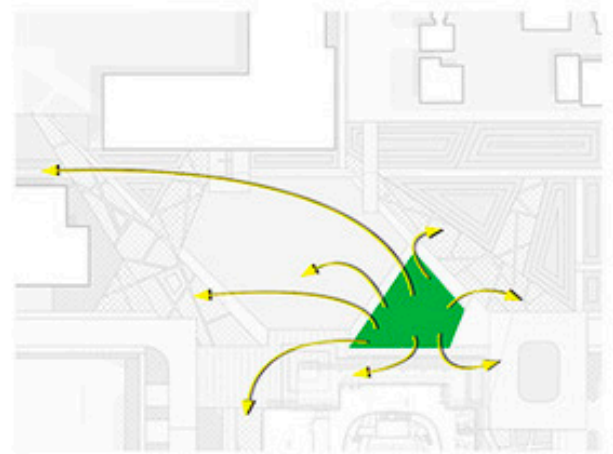






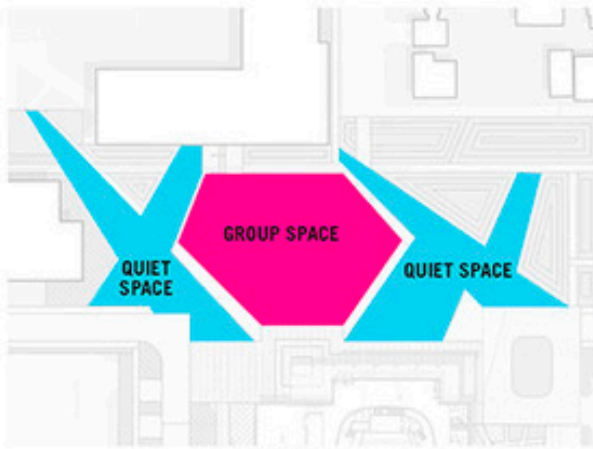
Land

+68% green space, +83% permeable surface

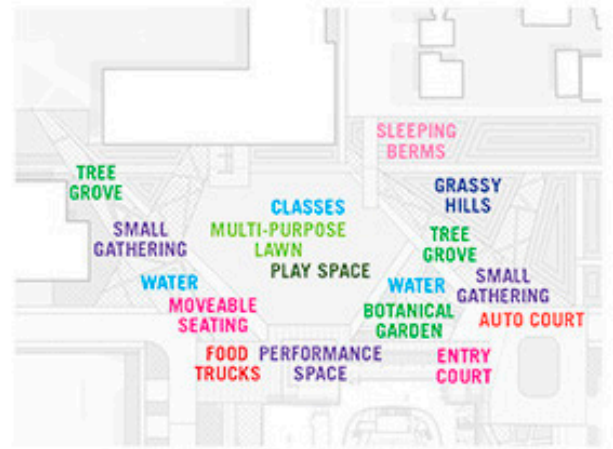


Plants

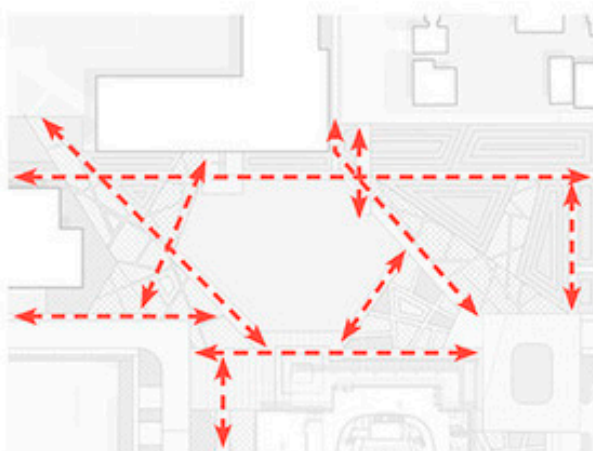
pollinator garden



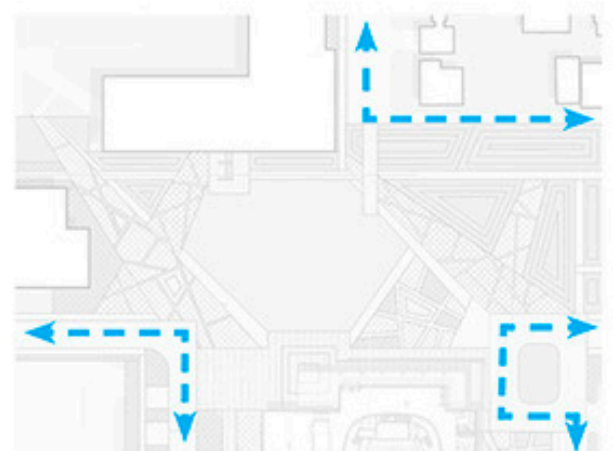
Social Spaces



Program



Pedestrian Circulation



Vehicular Circulation



Trees

+105 new trees , 1 transplanted tree



Water

land mitigation



Microclimates

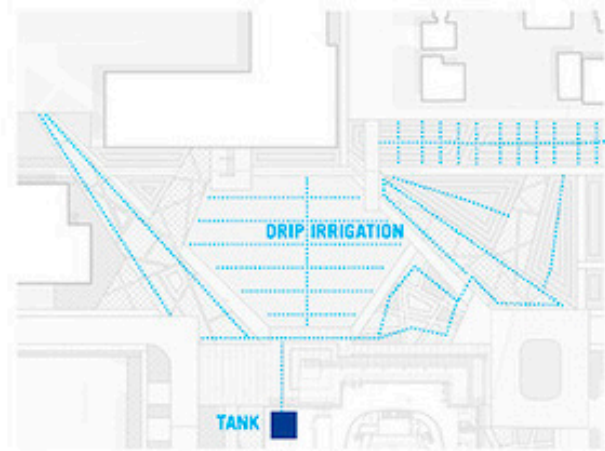
● summer shade ● winter sun



Seating



Lighting



Irrigation

Reusing Stormwater for Irrigation