

American Airlines Campus Mobility Enhancements

Fort Worth, TX

The American Airlines Campus has over 2 miles of multi-modal pathways, known as “The American Way”, that form a linear garden and wind between groves of trees, linking the entire campus.

The theme of the American Airlines Campus Mobility project is connectivity and inclusivity, as it achieves the client’s newly adopted motto “One Team, One Campus”. The Mobility project provides continuity in the landscape and connects all facilities on the property seamlessly together.

The paths provide mobility for pedestrians, the bike-share program, and the cart service, and connect employees from the north end of campus to the south and everywhere in-between. A new underpass creates a safe travel environment that separates campus traffic from FAA Boulevard, the public road that bisects the campus.

Along these winding pathways there are dedicated zones for outdoor classrooms, collaboration spaces, break areas, and recreation, providing for a variety of experiences. The project is highlighted by a highly detailed planting design, including over 1,000 newly installed trees that create shade and shelter from the harsh Texas sun, and over 70,000 individual plants, not including the native seed meadows. The central “spine” of the project is a continuous garden that provides a year-round rich botanical experience and also offers employees a much-needed connection to nature.

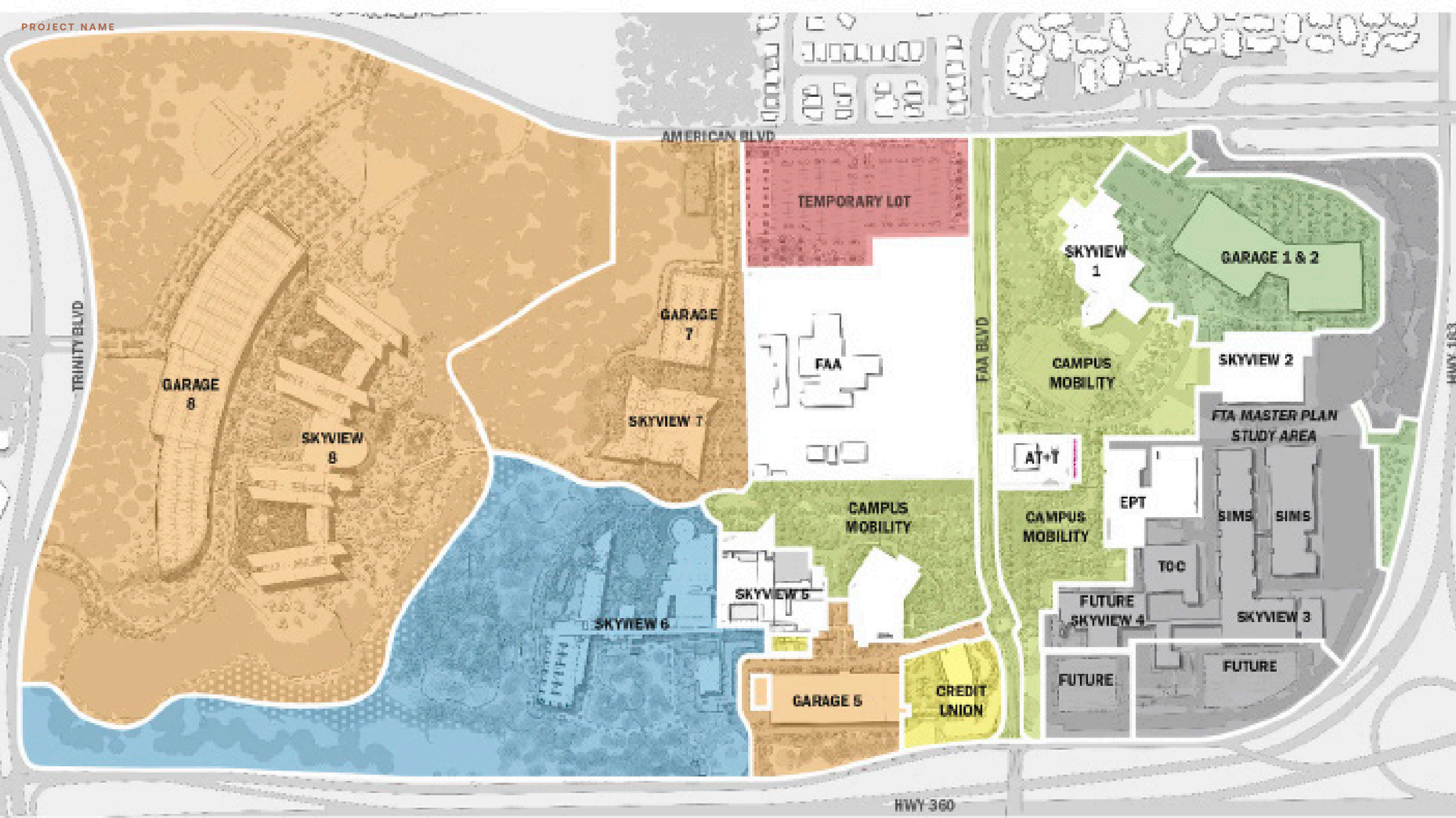
Client

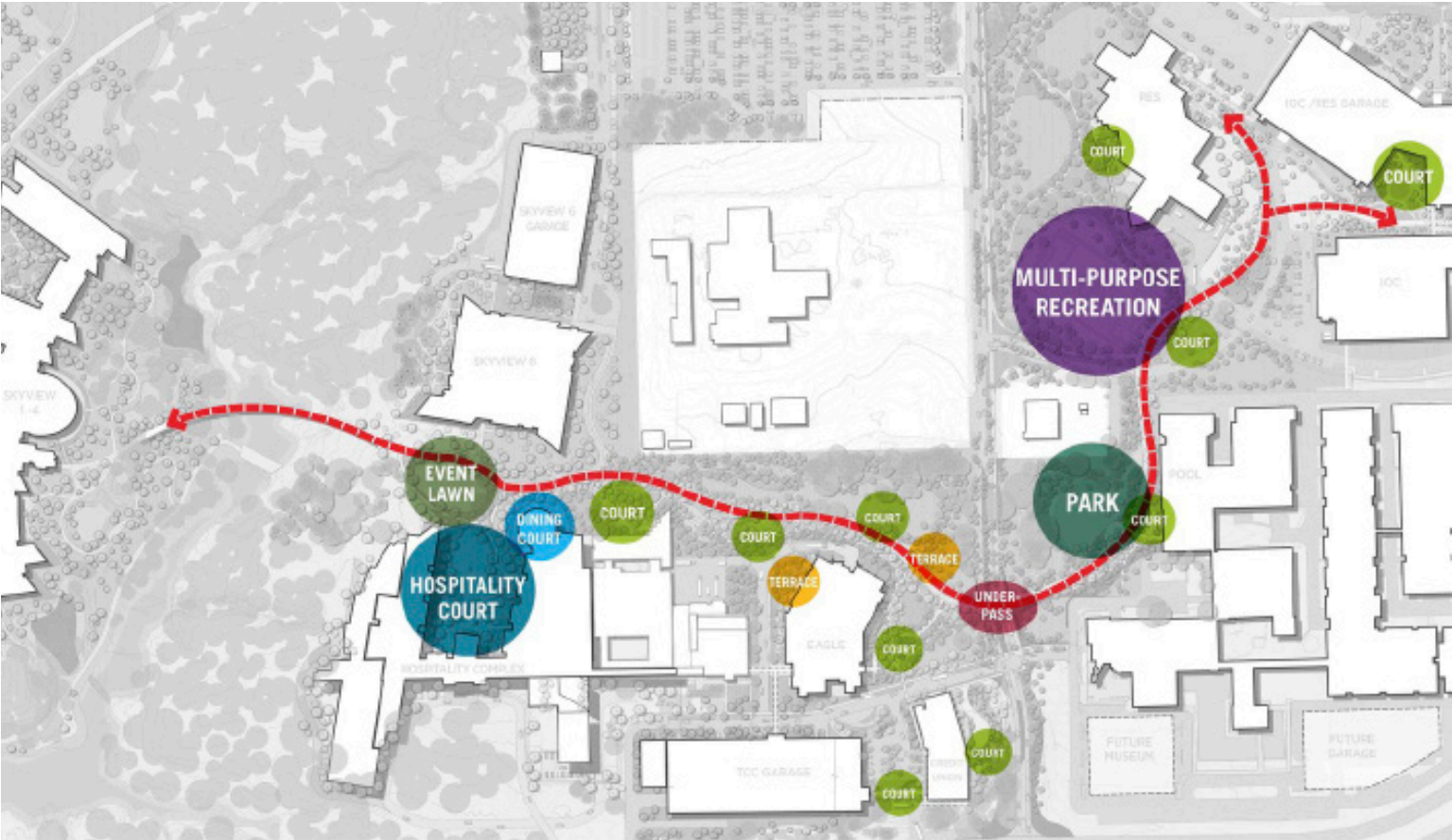
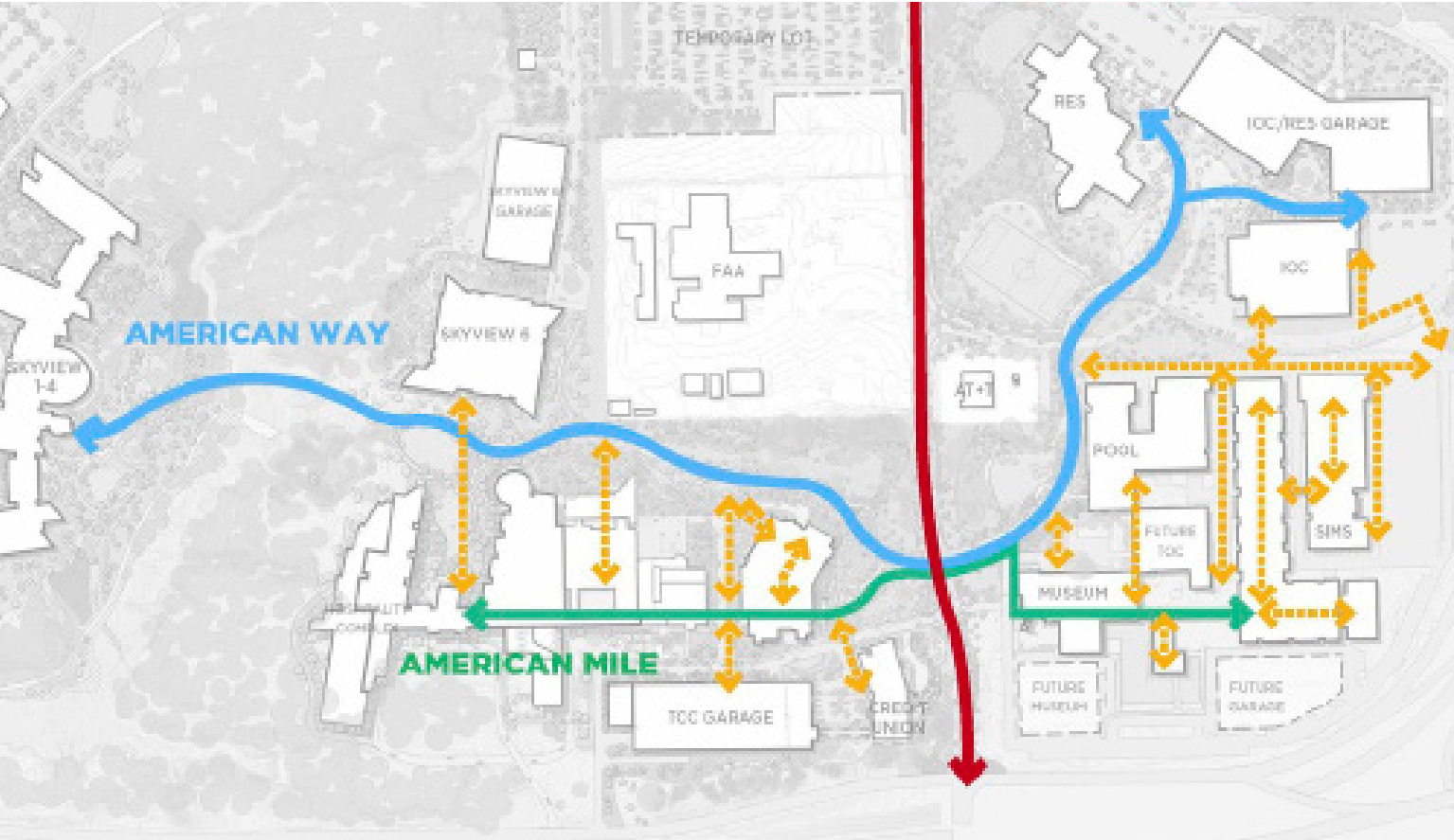
American Airlines

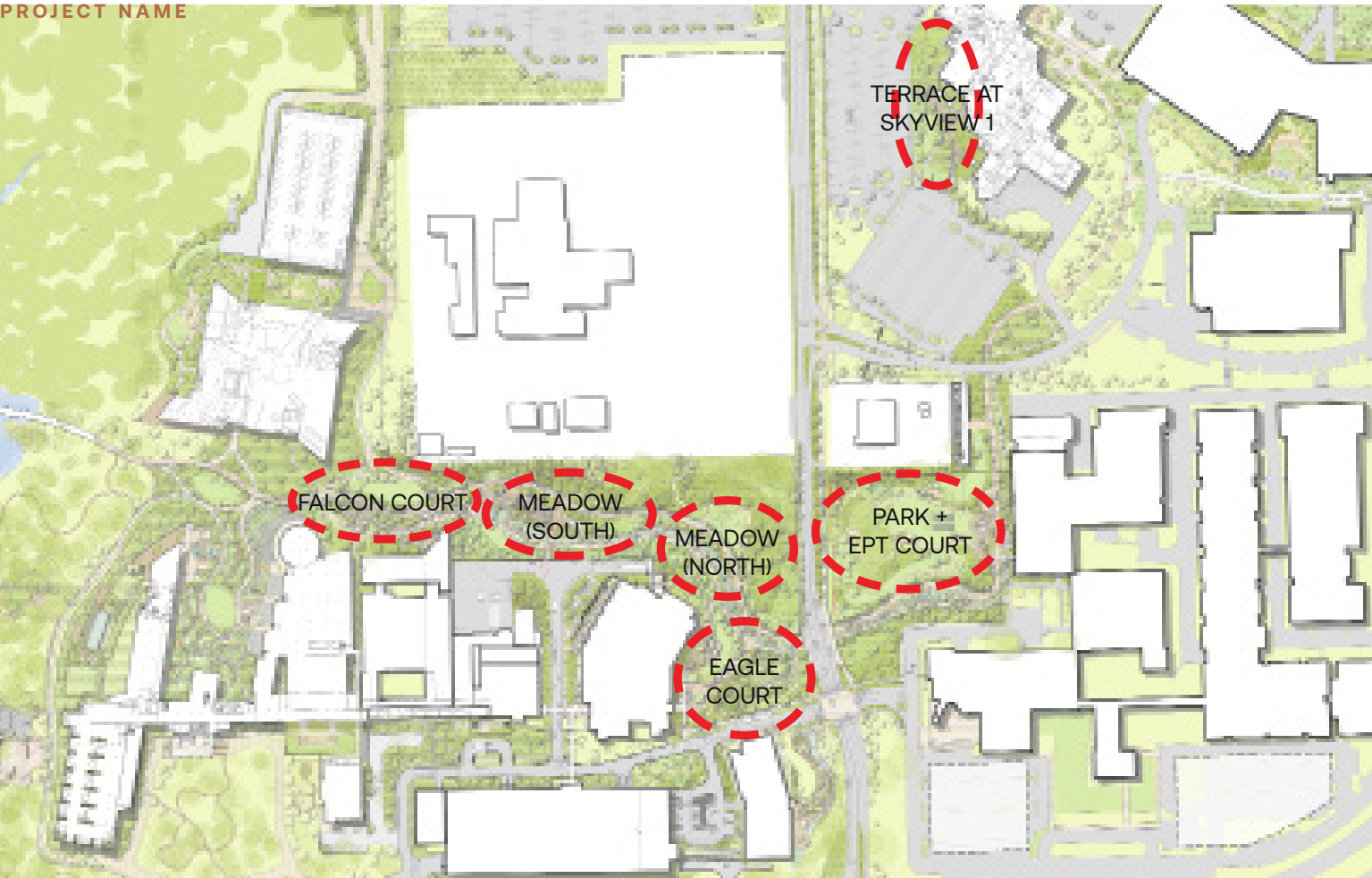
Team

Corgan
Alta Planning
Pacheco Koch
Reed Wells Benson & Co
Halff Associates
HMA Consulting
Moye Consulting
Quentin Thomas Associates
Thomas Associates
D|G Studios

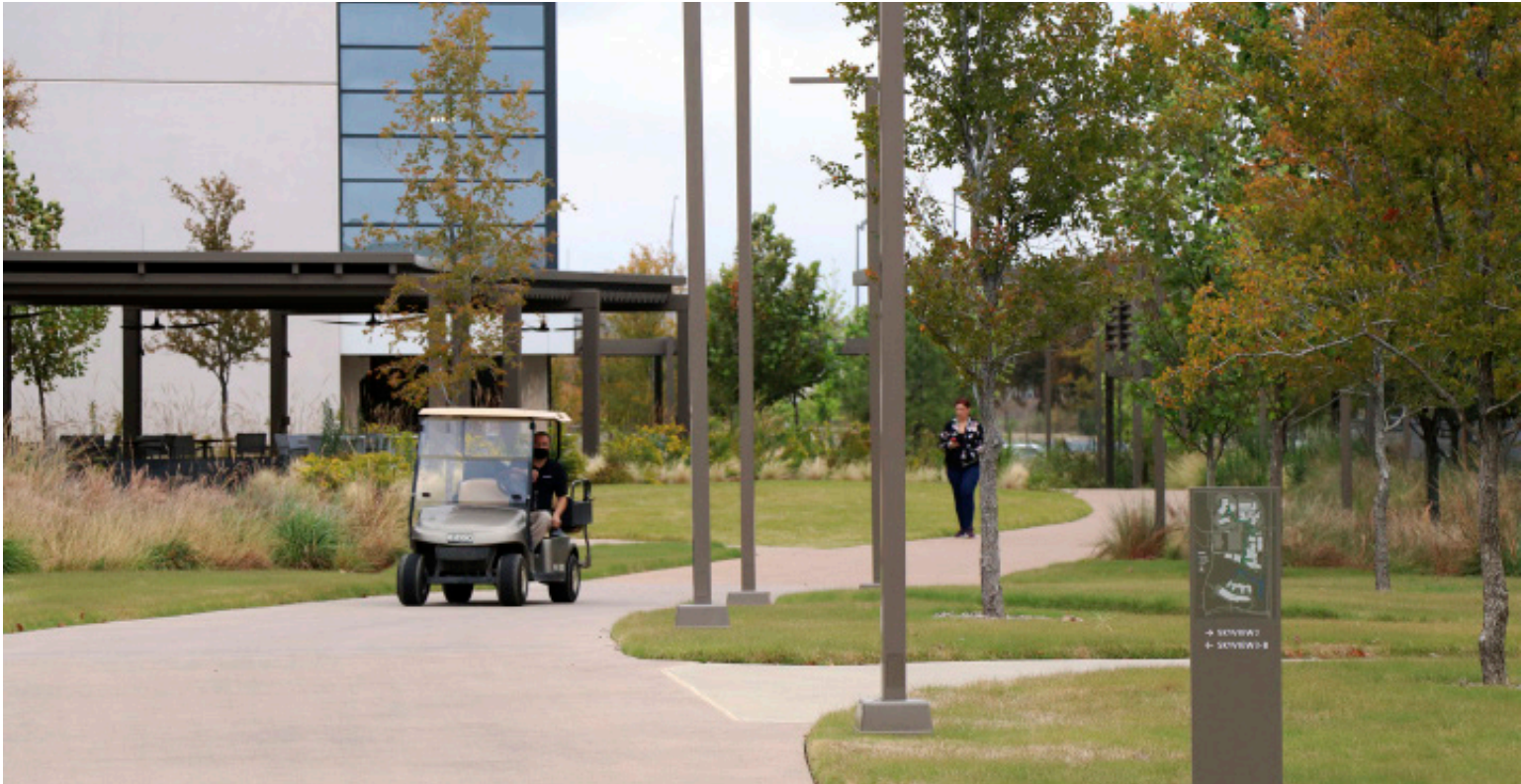


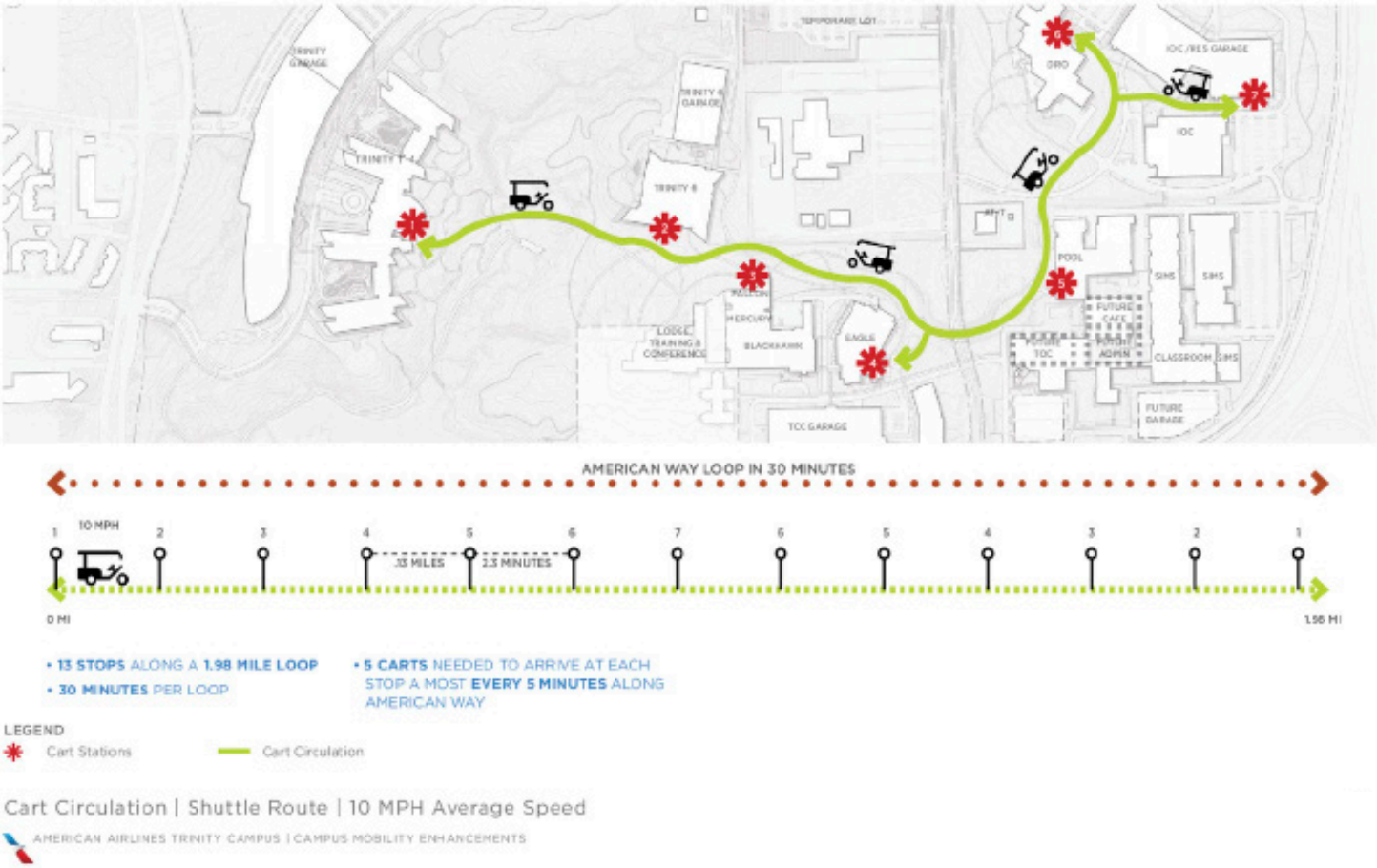
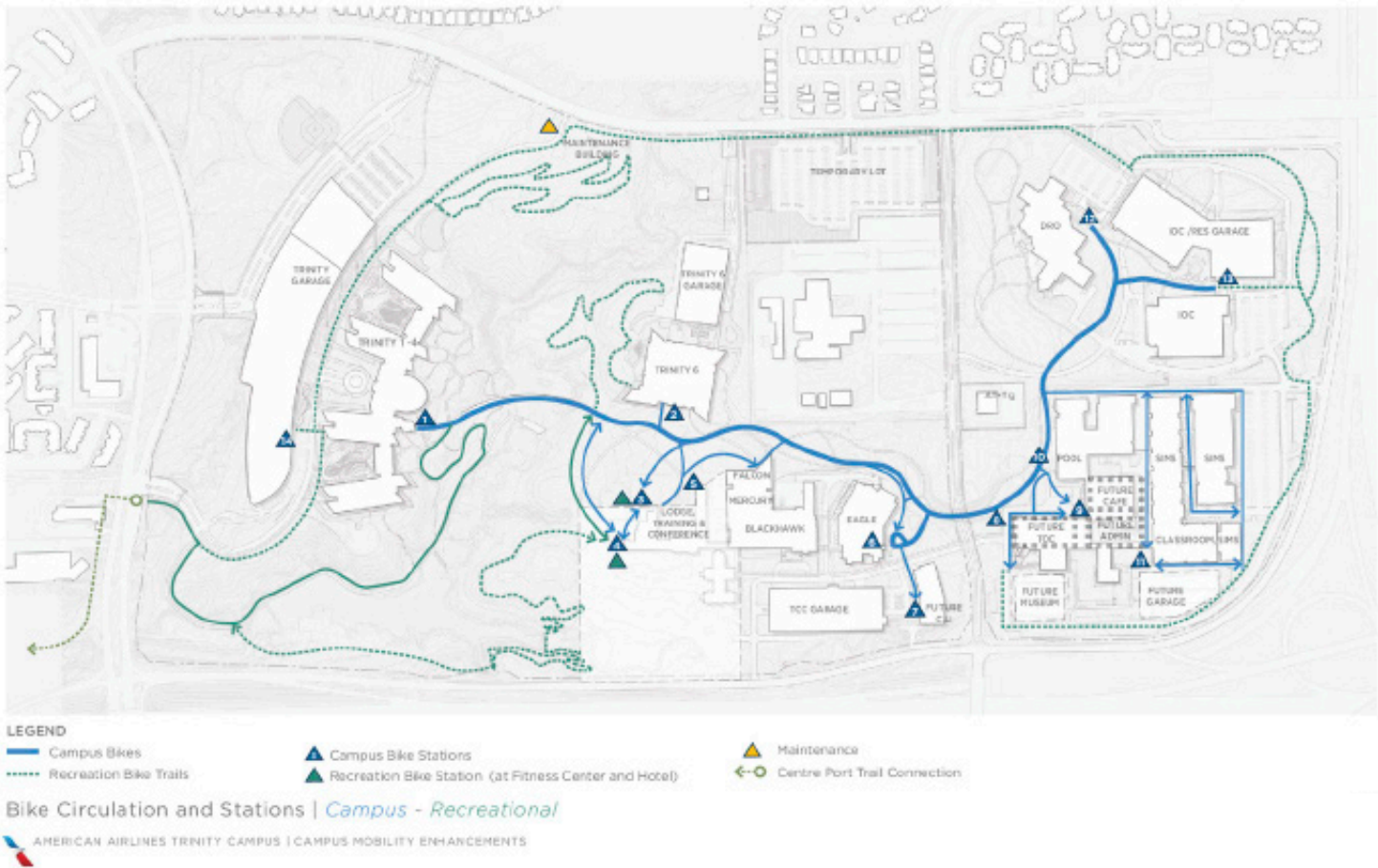












FOR INTERNAL USE ONLY!!!

PROJECT FACTS - DELETE THIS SLIDE IN QUALS/ PROPOSALS

SERVICES PROVIDED:

Master Plan, Landscape Architecture Design

CLIENT:

American Airlines

LOCATION:

Fort Worth, TX

DURATION:

Design Start: 2016

Design Finish:

Construction Start: 4/2019

Construction Finish: 10/2020

ON SCHEDULE/BEHIND SCHEDULE?:**BUDGET:**

Pre-Bid Estimate (Landscape): ???

Cost at Bid (Landscape): ???

Final Construction Cost (Landscape): ???

Final Total Construction Cost: ???

SIZE:**RENOVATION/NEW?:**

New

**PROJECT DELIVERY TYPE: (DESIGN/BUILD, CMAR,
DESIGN/BID/BUILD, ETC)****OJB TEAM:**

Principal in Charge: Jereck Boss

Project Manager: Andrew

TEAM:

Corgan

Alta Planning

Pacheco Koch

Reed Wells Benson & Co

Halff Associates

HMA Consulting

Moye Consulting

Quentin Thomas Associates

Thomas Associates

DJG Studios

LEED:**AWARDS:**

???

REFERENCE:**OWNER CONTACT:****CONTRACTOR CONTACT:**

Holder